



Flat 1 7 Huntingdon Road , London, N2 9DX

This spacious ground floor flat features three double bedrooms, two bathrooms, and a private garden.

Ideally located minutes from East Finchley tube station and High Road, the flat includes a Bright open planned reception room kitchen diner, Three large double bedrooms, One Family bathroom and another shower room. The garden includes a patio area. Presented in good decorative order, the property is offered unfurnished

Contact us today to arrange a viewing!

Disclaimer : A member of Haven is related to the landlord

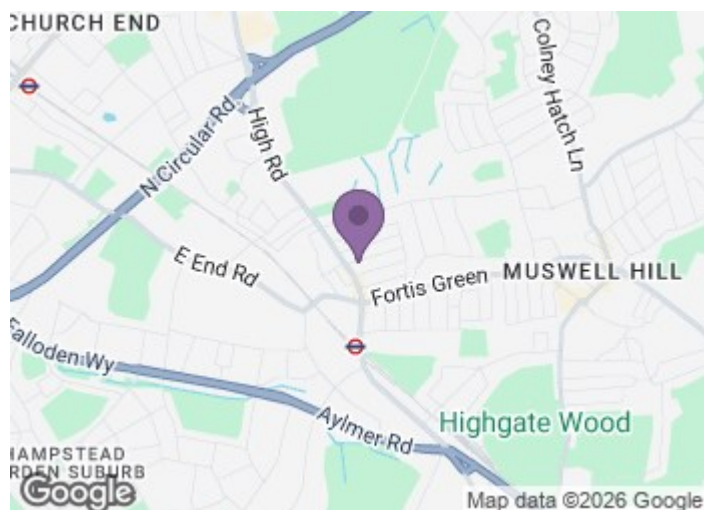
£3,000 Per month

Flat 1 7 Huntingdon Road

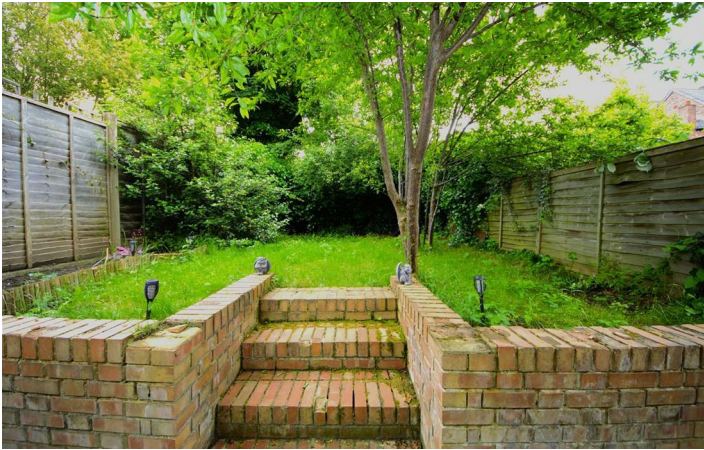
, London, N2 9DX



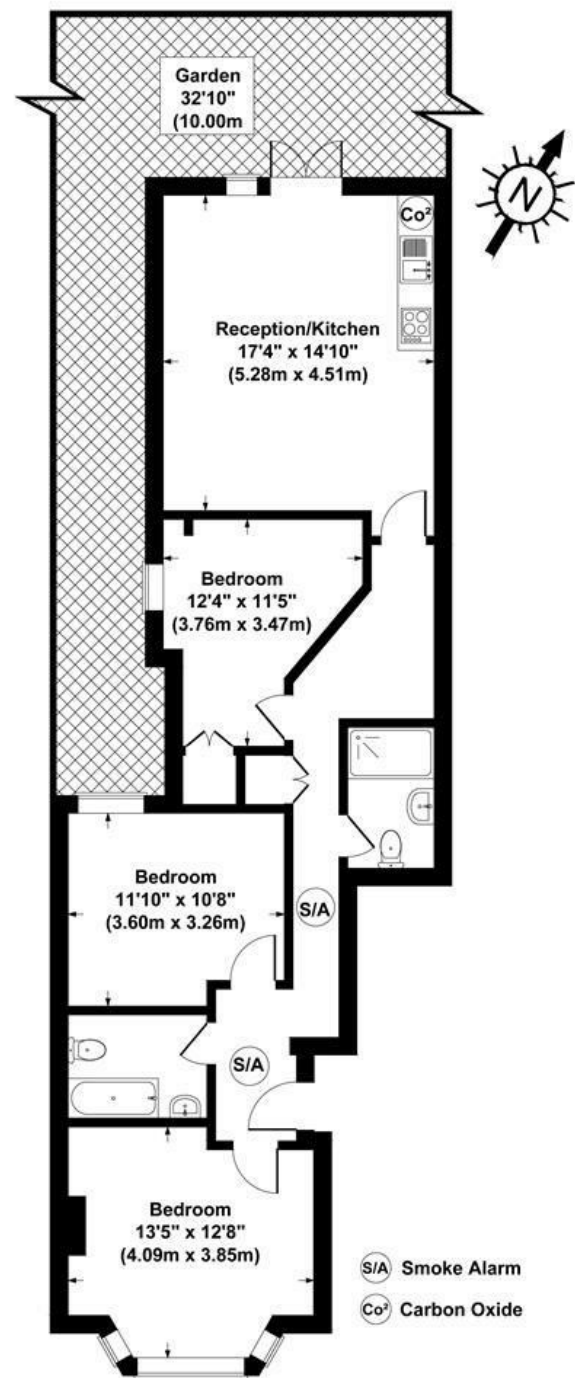
- Fantastic Location
- Private Garden
- Three Double Bedrooms
- Unfurnished
- Ample Storage



[Directions](#)



Floor Plan



7a Huntingdon Road, London, N2
Gross Internal Area 904 sq ft / 84 sq metres
Not to Scale. Produced by The Plan Portal 2022
For Illustrative Purposes Only.

These particulars, whilst believed to be accurate are set out as a general outline only for guidance and do not constitute any part of an offer or contract. Intending purchasers should not rely on them as statements of representation of fact, but must satisfy themselves by inspection or otherwise as to their accuracy. No person in this firms employment has the authority to make or give any representation or warranty in respect of the property.

Energy Efficiency Rating		
	Current	Potential
Very energy efficient - lower running costs		
(92 plus) A		
(81-91) B		
(69-80) C	70	76
(55-68) D		
(39-54) E		
(21-38) F		
(1-20) G		
Not energy efficient - higher running costs		
England & Wales		
EU Directive 2002/91/EC		